

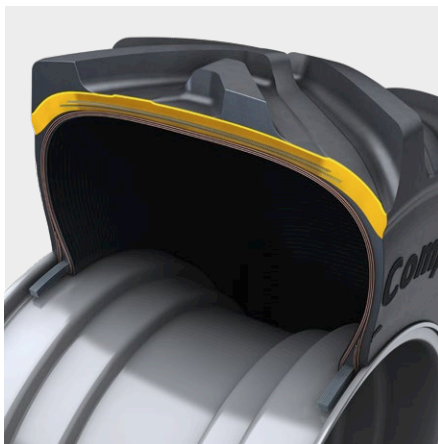
# Agricultural Tires CompactMaster AG

- › Loading and collecting of farm goods on field and grass land
- › Tire construction with focus on tilting stability
- › Maximum speed up to 50 km/h



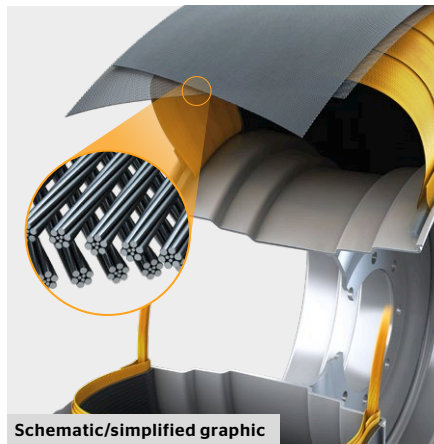
## Application

- › For agricultural work with telescopic handlers and compact loaders as universal vehicles on farms



### Turtle Shield Shaped Tread Base Line

Protection of the shoulder area against penetration and cuts by foreign objects



### Twisted Steel Belt

High stiffness of tire in lateral direction

Protection in center area against foreign objects



### Wide lugs and wide lug base

High traction on muddy grounds

Good self-cleaning behavior

Tire size LI/SSY	Rim width	Section width (mm)	Overall diameter (mm)	Loaded static radius (mm)	Rolling circum- ference (mm)	Speed Radius Index	Tire load capacity (kg) at tire pressure (bar)								Speed (km/h)	
							1.6	2.0	2.4	2.8	3.2	3.6	4.0	4.4		
<b>24 inch</b>																
<b>460/70 R 24 IND 159A8/159B</b>	<b>15</b>	<b>481</b>	1244	559	3710*	600	2120	2500	2885	3270	3650	4010	4375		50	
							2120	2500	2885	3270	3650	4010	4375		40	
	2240	2650					3055	3460	3870	4275	4680		30			
	2320	2740					3165	3585	4010	4435	4860		25			
	2570	3140					3710	4280	4850	5420	5990	6560	10 cycl.			
	3940	4815					5690	6560	7435	8310	9185	10060	0 stat.			

\* Calculated value

Specifications are subject to change without notice.

For further technical information, see data sheets.

For details regarding product availability, please contact your local sales representative.

**Continental Reifen Deutschland GmbH** | Commercial Specialty Tires

Büttnerstraße 25 | 30165 Hannover | T. +49 511 938-01 | mail\_service@conti.de | www.continental-specialty-tires.com